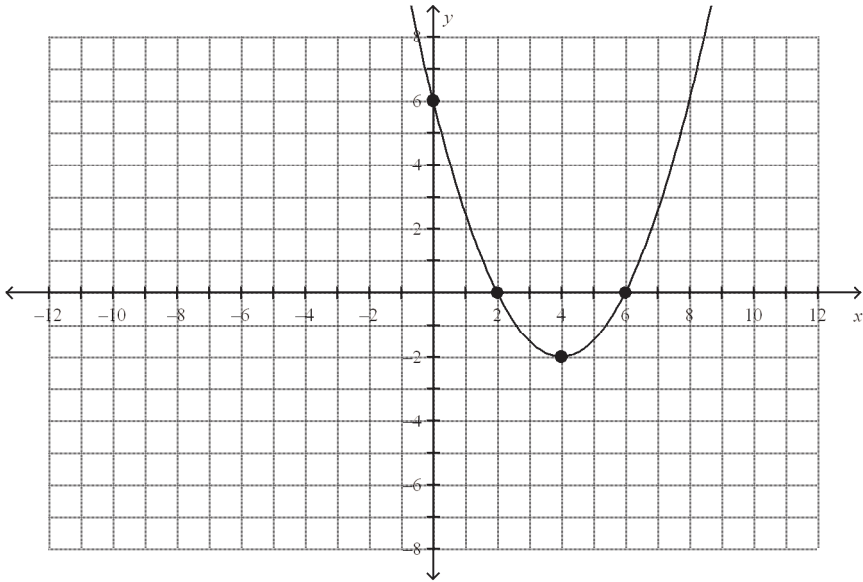


Proficiency Demonstrated: Perfect ☐ Sufficient ☐ Insufficient (Repeat Assessment) ☐

**MBF3C - ESPA - Quadratics Relations**

1. Determine the vertex, the zeros, the y-intercept, the direction of opening and the axis of symmetry.



vertex \_\_\_\_\_ zeros \_\_\_\_\_ y-intercept \_\_\_\_\_

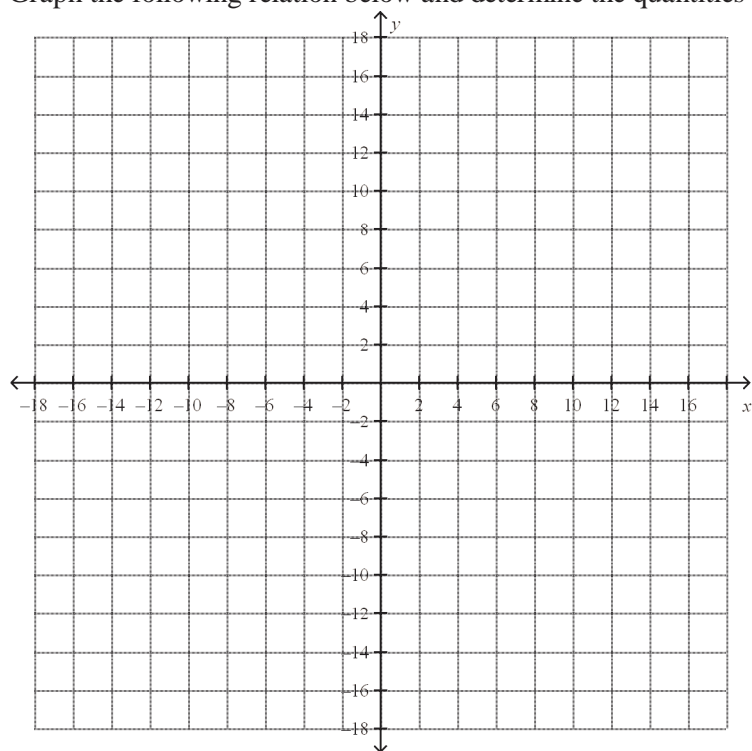
direction of opening \_\_\_\_\_ axis of symmetry \_\_\_\_\_

2. Complete the table of values for  $y = -(x - 5)^2 + 6$

x	y
3	
4	
5	
6	
7	

Name: \_\_\_\_\_

3. Graph the following relation below and determine the quantities in the table:  $y = -(x - 6)^2 - 5$



Vertex \_\_\_\_\_ Direction of opening \_\_\_\_\_

Axis of Symmetry \_\_\_\_\_ Step Pattern \_\_\_\_\_

4. Find the axis of symmetry and then find the vertex for the following equation:  
 $y = (x - 2)(x + 6)$